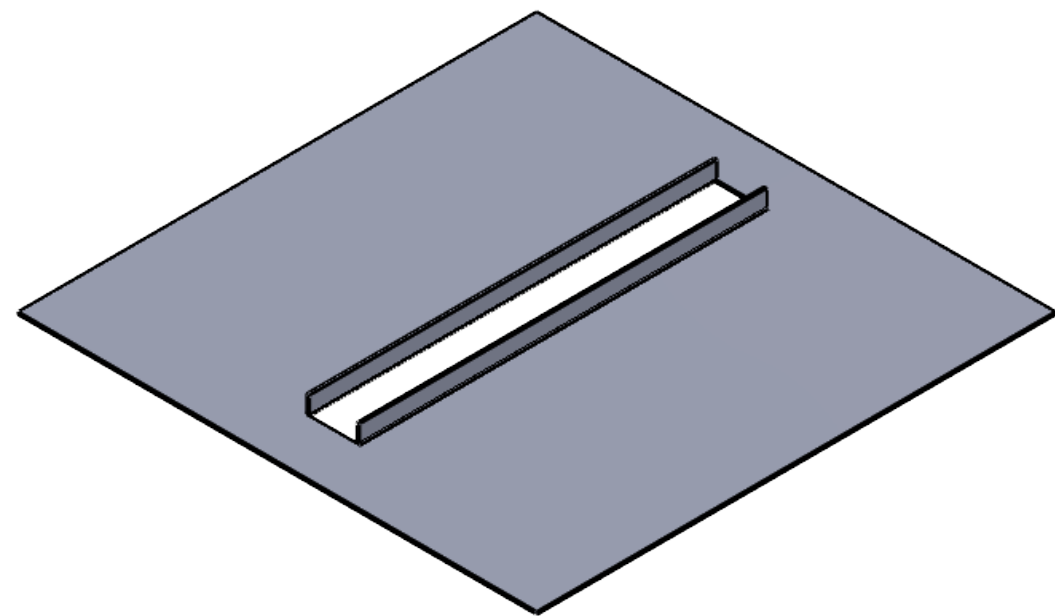
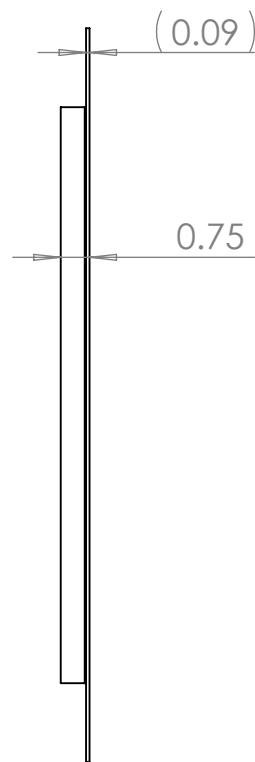
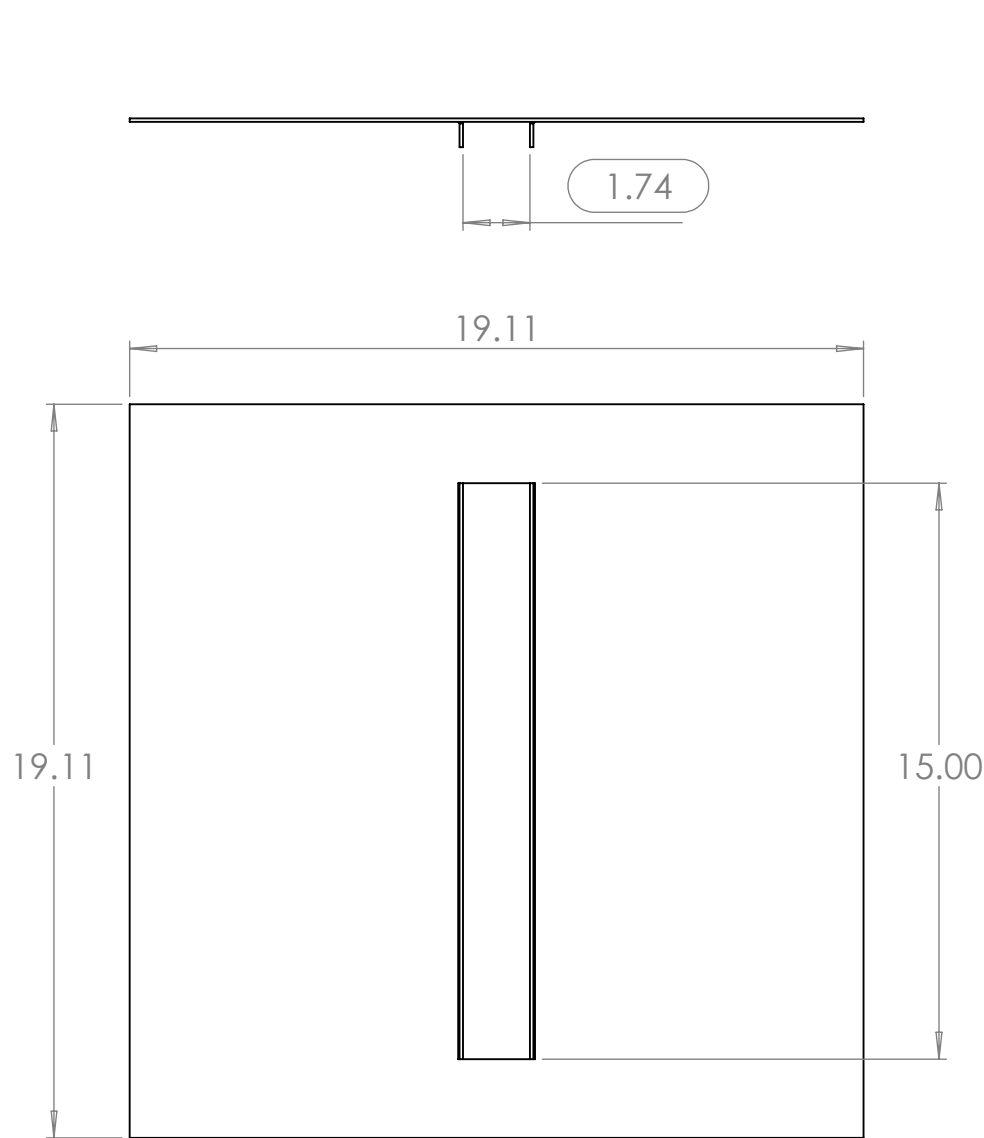


B

A

B


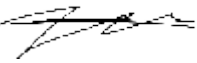
A



NOTES: UNLESS OTHERWISE SPECIFIED.

1. PARAMETRIC MODEL. ALL DIMENSIONS FURTHER SPECIFIED IN 003-00037.
2. FLAT PATTERN FOR PART SPECIFIED ON LAST SHEET OF DRAWING.
3. PART SHALL BE FREE OF ANY SHARP EDGES AND BURRS.
4. PART TO BE CLEANED OF ALL OIL AND DEBRIS.
5. MATERIAL: A1008 STEEL
6. FINISH: NONE
7. GAUGE: 13
8. PART SHALL NOT BE MODIFIED BY ANY PARTY OUTSIDE PAPERLESS PARTS, INC UNLESS WRITTEN OR EXPRESS APPROVAL HAS BEEN PERMITTED FOR THE PART.

PROPRIETARY AND CONFIDENTIAL
THE INFORMATION CONTAINED IN THIS
DRAWING IS THE SOLE PROPERTY OF
PAPERLESS PARTS, INC. ANY
REPRODUCTION IN PART OR AS A WHOLE
WITHOUT THE WRITTEN PERMISSION OF
PAPERLESS PARTS, INC IS
PROHIBITED.

UNLESS OTHERWISE SPECIFIED:		NAME	DATE	<div></div> <div>TITLE: SHELF, PC RACK, FULL SERVER RACK</div>	
DIMENSIONS ARE IN INCHES		DRAWN	NM		
TOLERANCES:		CHECKED			
ANGULAR: MACH ± 1.0°		ENG APPR.			
BEND ± 0.5°		MFG APPR.		<div>Q.A.</div> <div>COMMENTS: </div>	SIZE B
ONE PLACE DECIMAL ± 0.1					
TWO PLACE DECIMAL ± 0.05					
MATERIAL A1008 STEEL				DWG. NO. 003-00037	REV 000
FINISH NONE					
DO NOT SCALE DRAWING				SCALE: NTS	WEIGHT: SEE MODEL
				SHEET 1 OF 2	

4

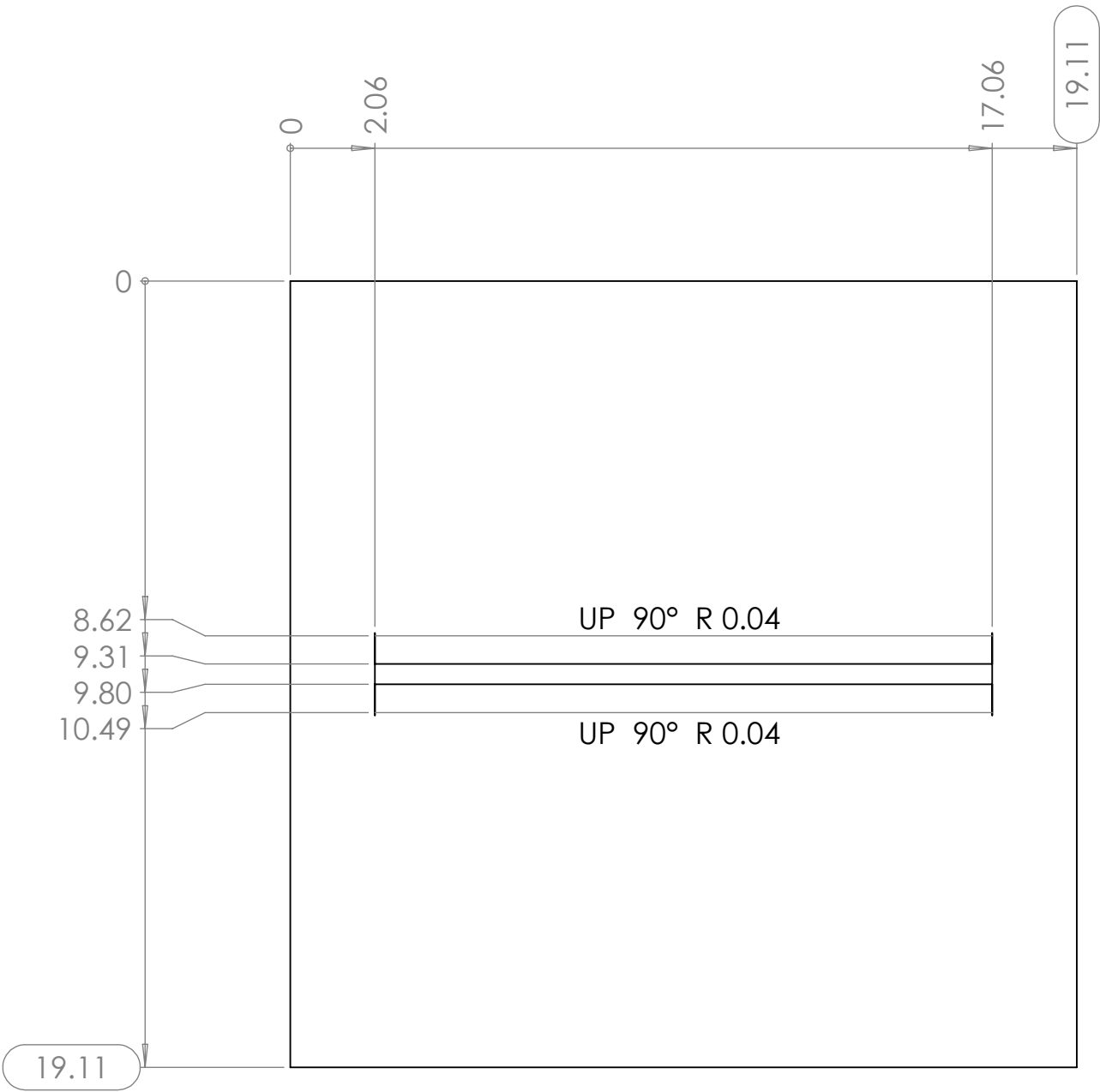
3

2

1

B

B



A

A

PROPRIETARY AND CONFIDENTIAL
THE INFORMATION CONTAINED IN THIS
DRAWING IS THE SOLE PROPERTY OF
PAPERLESS PARTS, INC. ANY
REPRODUCTION IN PART OR AS A WHOLE
WITHOUT THE WRITTEN PERMISSION OF
PAPERLESS PARTS, INC IS
PROHIBITED.

UNLESS OTHERWISE SPECIFIED:

DIMENSIONS ARE IN INCHES
TOLERANCES:
ANGULAR: MACH $\pm 1.0^\circ$
BEND $\pm 0.5^\circ$
ONE PLACE DECIMAL ± 0.1
TWO PLACE DECIMAL ± 0.05

INTERPRET GEOMETRIC
TOLERANCING PER: ASME Y14.5

MATERIAL
A1008 STEEL

FINISH
NONE

DO NOT SCALE DRAWING

NAME
NM

DATE
8/30/2024

DRAWN

CHECKED

ENG APPR.

MFG APPR.

Q.A.

COMMENTS:

paperlessPARTS

TITLE:
**SHELF, PC RACK, FULL SERVER
RACK**

SIZE **B** DWG. NO. **003-00037** REV **000**

SCALE: NTS WEIGHT: SEE MODEL SHEET 2 OF 2

3

2

1